



17th – 20th February 2016

It's a Date!

Southend Scout & Guide Gang Show

SOUTHEND GANG SHOW

50

1966 – 2016

years

IT'S A DATE



Are you looking for a birthday party with a difference?

Then look no further! At Little Musketeers we can provide you with a fun, exciting and truly memorable occasion for all involved!

Our 'swashbuckling' themed parties use brightly coloured foam and plastic fencing equipment that is 100% safe and yet hard enough to give children the real feel of fencing. Combine this with our free Little Musketeer invitations and party bags, personalised medals and trophies, exhilarating swashbuckling games and expert fencing tuition and your child really will have a unique and thrilling event to look forward to!

'Creating the Champions of Tomorrow'

Little Musketeers is a welcome and friendly club giving young children from the age of 5 a fun and safe introduction to the exciting sport of fencing. Fencing is immensely popular with children and is fast becoming the new niche alternative sport to help improve fitness, co-ordination, agility, speed and strength whilst also appealing to a child's sense of play.

The classes are also supervised by former Olympian James Beevers.



www.littlemusketeers.com

email: enquiries@littlemusketeers.com

Tel: 07930 490622



ST ANN'S Building Supplies For Beautiful Bathrooms

Come and see our showrooms at:

- ♦ Bentalls Close, Southend on Sea
(near Sutton Road Fire Station)
Tel: 01702 463363
- ♦ 1259 London Road, Leigh on Sea
(next to Waitrose Leigh)
Tel: 01702 475403



Luke video

**are excited to
be producing the
Official DVD for the
Southend Gang Show 2016!**

shows events weddings
hello@lukevideo.co.uk

www.lukevideo.co.uk

WELCOME!



Welcome to Southend Gang Show and thank you for joining us to celebrate 50 years of 'It's a Date'. What a show it is and has been! Not only for all the people we have entertained but also those that have been a part of it both back and on stage. We were once asked if anyone went on from the Gang Show to bigger and better things – the answer they all did!

As for this show, for the past five months we have been inspired by the commitment and enthusiasm shown by over sixty young people. They have sung new songs, learnt countless dance steps, put together sketches, made friendships that will last a lifetime and broadened their Scouting and Guiding journey.

Add to this mix the twenty-five members of the junior gang, the band and over fifty members of staff

who volunteer tirelessly week after week, and you have the ingredients for a fantastic variety show. To complete the recipe we need you, the audience.

We may be biased but we could not be prouder of the Gang as they take to the boards to perform for you. Ralph Reader introduced Gang Shows to entertain the audience and give the cast a memory of a lifetime. Now, we would love for you to sit back, relax, cheer and clap and, of course, enjoy the show.

Lesley Jenkins & Tim Browne
Show Managers





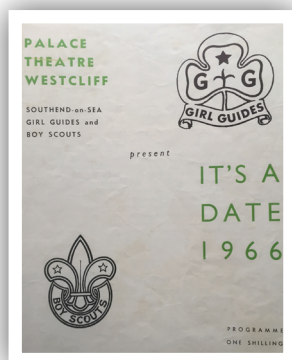
So with **50** years under the show's belt there are a lot of statistics to go with it – here are just a few:

- 30,000** The number of people the Gang performed to at the O2 arena.
- 12,518** The number of words that will be spoken or sung during the show (if they get them right!).
- 10,520** The number of people the Gang performed to at the Royal Albert Hall.
- 2,080** The number of hours of rehearsal over the past 50 years.
- 1,863** The approximate number of cast who have been involved in the show since 1966.
- 1,000** Items of costume involved in every show.
- 750** The number of cups of tea and coffee that the crew will have drunk during rehearsals and show week.
- 573** The number of staff involved in the show over the years.
- 500** The minimum number of costume changes in this show.

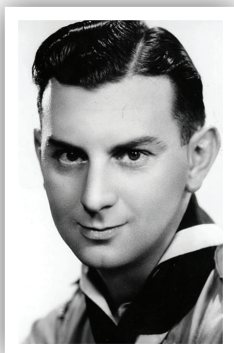
- 234** The meters of cable used for lighting and sound.
- 200** The approximate number of performances delivered.
- 132** Sets of siblings involved in the show.
- 36** The number of Scout and Guide Units involved with this show.
- 35** The number of married couples that have been involved in the show (and many of them met through the show!).
- 32** Different families involved over the years.
- 26** The number of shows David Goddard has been involved (that's all of them!).
- 10** The number of times the show appeared at the Cliffs Pavilion (1 less than the Palace Theatre).
- 5** The number of sets of twins that have appeared in the show.
- 3** Number of Essex Jamboree opening ceremonies the Gang has been involved in.
- 1** The number of times the show was performed at the Kursaal Estate.

1932

In 1932, Ralph Reader created the 'Gang Show' as a way of bringing Scouts together to raise money for a swimming pool at Downe's Campsite.



Whilst there had been many Gang Shows in Southend, the first area Gang Show in Southend was also the first Gang Show in the country to have girls. It was because of this that Ralph gave us our own name "It's a Date!"



1966

1968


Ralph came and saw the first few shows, which as you can imagine, was a real treat for the cast and staff.



This was Jacky Goddard's second show - it wasn't her last! She was in the show until 1972 and directed it from 1980 to 2012.

1970

SOOS
CELEBRATING 10 YEARS
Presents





13th - 16th April 2016

Book by Michael Stewart. Music & lyrics by Jerry Harman. Based on the play "The Matchmaker" by Thornton Wilder.
Original Production Directed and Choreographed by Gower Champion.
Produced for the Broadway Stage by David Merrick and Champion Five Inc.
By arrangement with **MUSIC SCOPE** and
STAGE MUSICALS LIMITED of New York

**SOUTHEND
PALACE THEATRE**

Palace Theatre Box Office
01702 351135

www.southendoperatic.co.uk   www.southendtheatres.org.uk

Heidelberg CD 74 5 Colour Press 2/3 Perfector
@rt_litho_ltd
T: 01268 415 253
E: sales@rtlitho.co.uk
www.rtlitho.co.uk
The Print Centre, E1 Hemmells, Laindon North, Basildon, Essex SS15 6ED

rt Litho Ltd 

Design · Litho, Digital & Large Format Colour Printers · Print Management

5000 A6 Gloss Laminated Flyers*
300gsm Gloss Art Board 4 Colour Both Sides
Just £140 Delivered! *VAT Zero Rated

Luxury Business Cards*
Get 500 for the Price of 250
400gsm Silk, Matt Laminated Both Sides 4 Colour
£33 Delivered! *Price Subject to VAT

5000 A5 Leaflets*
4 Colour Both Sides 150gsm Gloss
£119 Delivered! *VAT Zero Rated

Stationery Packs*
500 Letterheads, Comp Slips & Business Cards 120/400gsm
Just £149 *Price Subject to VAT

RT Litho more than just ink on paper!

1972

The 1972 show was the last produced by the show's original producer, Eddie Gregory, before he moved to America.



1976

As a variety show, there would be items with big songs and dances, as well as some original Ralph sketches like this one: The Owls.



1980

After a stint at the Cliffs Pavillion, the Show returned to the Palace Theatre before it closed (not for the first time!).



This was one of the most popular shows, entertaining an audience of over 5000.

1974



Moving with the times, the programme used the shadow dancers to advertise the show.

1978





production lighting

DPL are happy to be providing lighting and design for the Southend Gang Show

+44 (0) 1268 732299

info@dplx.co.uk

www.dplx.co.uk

Elegant Cookware

Rated 'best range' by BBC Good Food!



♥ Ceramicly Reinforced 3-Layer Coating

♥ Heats Up Fast, Save Time/Energy

♥ Healthy, Low Fat Cooking

♥ 3 Year Guarantee

♥ PFOA Free

**Non-Stick Bekadur
Dualforce Coating**

Elegant Cookware

01702 868 035 | www.elegantcookware.co.uk

1982 was our year on tour. We performed at Leigh Wesley Church and at the prestigious Kursaal!



A larger stage at the Cliffs meant the Maplin and 1st/6th Westcliff Scout and Guide Bands had the opportunity to perform in our Victory item.



With the show performing on even years, we obviously follow the Olympics. This show opened with all things sporty.



Through popular demand and an uncertainty over the show, we performed the '84 Show at Southend College then on the Carnarvon Road Site.



1982

1984

1986

1988

1ST ACT



1:1 CELEBRATION

(performed in 1984, 2010)

Sponsored by Crouch Valley
District Scouts



1:2 UPON THE STAGE

(performed in 1990, 1994, 2010)

Sponsored by Thorpe Hall School



1:3 UP ON THE ROOFTOPS

(performed 1999, 2000, 2002)

Sponsored by Vimpey



1:4 LAWN CHAIR DRILL

(performed 2010)

Sponsored by Meridian Kung Fu
Thorpe Bay & Shoeburys



1:5 BESIDE THE SEASIDE

(performed 1980, 2004, 2006)

Sponsored by The Moorings
Bed and Breakfast



1:6 GOSPEL

(performed 1998)

Sponsored by Southend
Operatic & Dramatic Society



1:7 EVENING APPOINTMENT

(performed 1990, 2008)

Sponsored by Hayes
Physiotherapist Clinic



1:8 UP GIRLS AND AT EM

(performed 1980, 1994)

Sponsored by Captain Cyan



1:9 MEET THE NAVY

(performed 1966, 1970,
1976, 1982, 1994)

Sponsored by Wetsuit Outlet





Southern Scout and Guide Gang Show

2ND ACT



2:1 LET IT BE

(performed 2002)

Sponsored by Masons
Chartered Accountants

2:2 HANDS

(performed 1996, 1998, 2006)

Sponsored by Cyan Marketing

2:3 ROCK AND ROLL

(performed 1992)

Sponsored by Hildale Academy
of Performing Arts

2:4 FROM A DISTANCE

(performed 2002, 2010)

Sponsored by the Lunn Family

2:5 THE PROJECTIONIST

(performed 2002, 2010)

Sponsored by ONTV Ltd, Television
& Corporate Video Production

2:6 THEATRE LAND

(performed 1972, 1984, 1986,
1996, 1998, 2002, 2004, 2012)

Sponsored by Oliver, the Palace
Theatre Youth Summer Project

2:7 TAKE AWAY

(performed 1984, 2004)

Sponsored by Coffee Matters

2:8 FINALE

Sponsored by Southend
Estuary Scout District

Units and Groups involved in the Show

Scouting

3rd Thorpe Bay Cubs

1st Great Waking Scouts
5th Canvey Air Scouts
2nd Thundersley Scouts
2nd Thorpe Bay Scouts
6th Westcliff Scouts
1st Hawkwell Scouts
6th Rayleigh Scouts
1st Shoeburyness Scouts
1st Chalkwell Bay Scouts
9th Leigh On Sea Scouts
4th/6th Leigh On Sea Scouts
55th Leigh On Sea Scouts

Nore Explorers
Lynx Explorers
Patriot Explorers
Amazon Explorers
Columbus Explorers
Mercator Explorers

Synergy Scout Network
Crouch Valley Network

Guiding

17th Leigh Rainbows
2nd Chalkwell Bay Rainbows
2nd Eastwood Rainbows

1st Great Waking Brownies
3rd Great Waking Brownies
1st Chalkwell Bay Brownies
6th Castle Mount West Brownies
2nd Chalkwell Bay Brownies
17th Leigh Brownies

5th Thorpe Bay Guides
2nd Chalkwell Bay Guides
3rd Downhall Guides
1st Leigh Guides
2nd Hadleigh Guides
4th Eastwood Guides
8th Shoeburyness Guides
2nd Great Waking Guides
4th Thorpe Bay Guides
1st Chalkwell Bay Guides
2nd Southchurch Guides
17th Leigh Guides

Phoenix Rangers

Isis Senior Section
Rayleigh Mount Senior Section

"Wishing everyone involved good luck From Carol and her team at The Hildale Academy of Performing Arts"

"2nd Southchurch Scout Group, 4th Eastwood Guides and Falcon Rangers wish all the cast the very best for a brilliant Show in their 50th Anniversary Year of the Southend Scout and Guide Gang Show 'It's a Date' Here's to the next 50 years. Go Ellie, Francesca, Libbie, Zoe and Kaleigh!"



We gave our last show at the Cliffs Pavilion a big send off with a big top and raised a circus tent on the stage.



As if 75 on stage isn't enough, we decided to have one above - the first and last year we had a flying Peter Pan!



With the Cliffs being refurbished, we returned again to the Palace, a suitable venue to celebrate 60 years of Gang Shows.



If this is not your first Southend Gang Show, you may recognise costumes from the past - the Joseph coat has been on stage at least 10 times, including this year!

1990

1992

1994

1996



1998

1998 was a real 'variety show': from original Ralph items to puppets and UV lighting; to our interpretation of 'Captain Beaky'.



2000 at the Palace was a great opportunity to showcase some of the items the cast performed at the Royal Albert Hall in 1999.

2000

2002

2002 must have been a year of extremes - from as much noise as possible in 'Stomp', to the moving silence of the cast signing *From a Distance*.



The show has always looked at developing its own items. 2004 was no exception; this year we did our own version of the Red Arrows - the Red Hoovers!

2004

Main Gang (left): Abbie Cotterell, Alannah Bowles, Alex Moore, Alfie Chapman-Bourne, Alice Clark, Alice Turner, Alyx Spanton, Amelia Frampton, Becca Raggett, Bethan Ashworth, Billy Piercy, Brittiny Cole, Bronnie Jenkins, Charlotte Crisp, Chloe Nuttman, Chloe Perry, Cliona Tanner-Smith, Connie Davies, Dan Raven, Daniel Wanna, Dani Shurmur, Elizabeth Blatch, Ellie Langley, Ellie Mills, Emily Atay, Emily Charlton, Francesca Hicks, Freya Gentry, George Jefferson, Georgina Wilson, Hannah George, Harry Mills, Hayley Salter, Imogen Scanes, Jack Webb, Jade Salter, Jake Cotterell, Jake Inwood, Jessica Wellington, Josh Hales, Juliette Bowles, Kaleigh Parks, Kate Broderick, Leia Syme-Chapman, Libbie Staines, Lizzi Welsh, Lottie Mollica, Lucy Williams, Luke Bye, Luke Chapman, Madelaine Walker, Matthew Raggett, Max Webb, Melissa Green, Millie Goddard, Phoebe Cole, Rachel Cutler, Rachel Newsham, Rebecca Smillie, Rebecca Wiseman, Sydney Taylor, Toby Cotterell, Zara Smith, Zoe Green, Zoe Norris

Junior Gang (below): Aaron Farrow, Abi Hales, Alicia Frampton, Aliysha Foster, Bradley Moore, Elijah Clancey, Elizabeth Blower, Florence Blower, Hayden Tanner-Smith, Imogen George, Jack Stacey, Kate Williams, Logan Gentry, Mark Austin, Peg Jefferson, Phineas Westell-Mcdevitt, Sam Browne, Samuel Green, Shannon Diggines, Sophia Kleinberg, Sophie Gaudini, Tammy Brown, Toby Goddard



Band (left): Bex Kent, Dave Bryant, Ferghal Swanwick, Josh Kelly, Pam Murdoch, Liz Atay, Harrison Childs, Alison Rollingson, Ollie Hawes

2006

In 2005, the council shut the Palace and for a while we thought we might be homeless. Eventually we chose a new home for two shows at Shoebury High School.

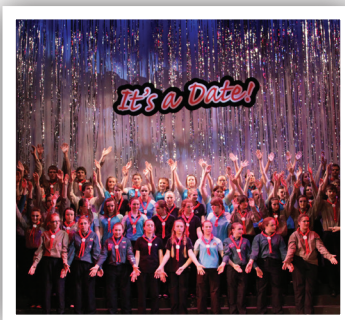


We closed the 2008 show with One Vision, One World. The cast were used to this item - they'd performed it the year before in front of 30,000 at the O2.

2008

2010

With new ownership at the Palace, the Show returned there for its 23rd show. It was also a chance to celebrate 100 years of Girlguiding.



2014

A Gang Show is a celebration of local talent. This year, not only were there dance and singing solos, but also sketches and a magic act.



Over the years there have been some very silly items in the show. None more however, than silly sacks - and we didn't lose one in the pit!

2012



Are You Up For The Challenge?

NEED A FUN, INTERACTIVE AND CHALLENGING TEAM BUILDING ACTIVITY FOR YOUR EVENT? THEN BOOK ...

It's a Knockout

For more information, please contact us at bookings@sgsitsaknockout.co.uk or visit our website www.sgsitsaknockout.co.uk



This event is brought to you by Southend Gang Show Active Support Unit

Essex Counties



WE DISCOVER, WE GROW

Girlguiding



Want to make new friends, learn new skills and have fun? Then you should get involved in Girlguiding in Southend! Southend East and West District are looking for Rainbows, Brownies, Guides and Senior Section members to join the fun!

Interested? Then contact:

Southend East

Julie Cutler – juliecutler5@btinternet.com

Southend West

Dilys Haddow – c.haddow833@btinternet.com

Essex Financial Planners
INDEPENDENT FINANCIAL ADVISERS

Call Martin Blagrove for a free review of your current financial planning.

Pensions, Protection & Investments.

Email: enquiries@essexfp.com

Phone: 07703 773855

Avonnet ABS locks, Proud sponsors of
NEIGHBOURHOOD WATCH

HOW SECURE ARE YOUR DOORS?

BURGLARIES ARE HAPPENING IN YOUR AREA NOW

AN AVERAGE EURO CYLINDER DOOR LOCK CAN BE BROKEN IN **13 SECONDS!**

90% of homes in the UK could have vulnerable door locks which can be "snapped" to gain access.

Don't wait for this to happen to you...

FREQUENTLY ASKED QUESTIONS

Q. My door bolt is the latest in security with lots of locking points such as hooks and a large deadbolt. Will it be secure?

A. It doesn't matter how many hooks and deadbolts you have. It's all down to the snap security of the

Once the cylinder has been snapped the other secondary security devices are useless as the door can be opened in seconds.

Q. My Euro Cylinder has a British 'Kitemark', will it be snap secure?

A. The British Kitemark standard BS EN 303: 2005 does not cover snap resistance

Only the SS312 Solid Secure Diamond & BSI TS007: 2014 '3 Star' accreditations mean that the cylinder has passed lock snapping tests. ABS has both of these standards & is snap secure without the need for additional security handles or cylinder guards.

Q. My Euro Cylinder has sacrificial sections to stop snapping attacks.

A. Snap off sections will slow down the attack, but only by a couple of seconds.

Brights Locksmiths
Established Security Providers

90% of homes in the UK could have vulnerable door locks which can be "snapped" to gain access.

Don't wait for this to happen to you...

CALL NOW FOR YOUR FREE SECURITY CHECK T. 01702-346-274

RE:CREATION FLOWERS

We are a locally based freelance florist with over 12 years of experience. We pride ourselves on three simple things that ensure our customers return to us again and again:

- Wonderfully fresh flowers
- Fabulous bespoke designs
- Superb personal service

GIFTS & HANDTIEDS : TABLE CENTRES : FUNERAL TRIBUTES
WEDDINGS : VALENTINE BOUQUETS : MOTHERS DAY FLOWERS

Bouquets from £20

Funeral tributes from £27.50

Arrangements from £25

Take a look at website for ideas or our Facebook page for comments and recommendations

Call us on 01702 476009 to order flowers

w: recreation-flowers.com f: [recreationflorists](https://www.facebook.com/recreationflorists)

Free delivery when you mention our offer code LF22014.

STAFF

SHOW MANAGERS

Lesley Jenkins, Tim Browne

SUPPORT MANAGER

Claire Brown

ADMIN TEAM

Dawn Salter, Jo Welsh, Trudi Coleman

TREASURER

Mark Brudenell

SECRETARY

Sally Browne

BUSINESS MANAGER

Mark Jackson

PHOTOGRAPHY & PROGRAMME DESIGN

Tim Browne

MARKETING MANAGER

James Jackson

FRONT OF HOUSE

Becky Tompkinson, Kate French, Wendy Bye

ARTISTIC DIRECTOR

Jo Brown

ARTISTIC TEAM

Barry Moore, Daniel Wanna, Debbie Daws, Emma Bearman, Ian Gilbert, John Welsh, Liam Bailey, Tim Browne, Tim Goddard, Zoe Norris

MUSIC MANAGER

Ashley Bye

BAND COACH

Ferghal Swanwick

REHEARSAL PIANISTS

Liz Atay, Pam Murdoch

FIRST AIDERS

Ian Johnson, Sheila Fenner

JUNIOR GANG SUPPORT

Alison Cotterell, Julie Cutler, Rachel Taylor

MAKE UP MANAGER

Fiona Scanes

WARDROBE MANAGER

Jacky Goddard

WARDROBE TEAM

Fiona Kell, Louise Hebden, Mary Thompson, Rachel Tompkinson, Sally Browne, Vicki Nicholson

REFRESHMENTS

Alison Tompkinson, Carol Apps, Christine Norris, Mary Thompson

TECHNICAL DIRECTOR

James Howell

PRODUCTION MANAGER

Jenny Hales

ASSISTANT STAGE MANAGERS

Del Hales, Matt Brown

BACK STAGE TEAM

Andy Haddow, Barry Moore, Beth Jenkins, Bob Bye, Chris Moore, David Goddard, Debbie Daws, Fiona Kell, John Welsh, Keith Batcheler, Liam Bailey, Mark Brudenell, Murray Higgs, Stuart Austin, Susan Jackson, Tim Goddard

PROPS TEAM

Amy Hebden, Bianca Cole, Emma Bearman, John Bearman

VIDEO & GRAPHIC DESIGN

Stuart Austin

LIGHTING DESIGN

Ian Penny, Rob Watson

SOUND DESIGN

Rob Gulston





For Bookings:

T: 01702 555154

E: info@affinity1777.co.uk

W: www.affinity1777.co.uk

1777 London Road,
Leigh-on-sea, SS9 2ST

**Family & Friends Dining Groups
welcome for that special celebration**

**Set price Lunches with
a variety of dishes
to choose from**

£12.00 - 2 Courses

£14.50 - 3 Courses

Taking Bookings for:

Valentines Day

Mothers Day

Easter Sunday

Fathers Day

Evening Menu

Extensive Choice

£17.50 - 2 Courses

£21.50 - 3 Courses

Early Diners

Sit by 6.30pm to receive

25% off food bill

(Tues - Fri)

Ever Popular Sunday Lunch

£12.00 - 2 Courses

£14.50 - 3 Courses

Open Tuesday - Sunday

*Morgan Academy of Performing
Arts Presents*



**SOUTHEND
PALACE THEATRE**

**Let's
Dance**

Friday 1st April 7:30

Saturday 2nd April 2:30 & 7:30

Box Office: 01702 351135